

**For Sale
or For Lease**



Office and Warehouse with fenced yard **\$475,000.00**

1531 Early Street, Norfolk, Virginia 23502 **\$4,300.00/m**

Property Details: Great property, perfect for contractor or service company.

6,849 square foot building with approximately 3,000 square feet of finished offices, large conference room, lab space, kitchen, 3 bathrooms and approximately 3,850 square feet of shop space. Shop / warehouse space can be enlarged and can also make space for a showroom.

Zoned light industrial, .3354 acre lot with separate parking and fenced storage yard to secure your vehicles or equipment. Fenced area is expandable forward. Lease is triple net

Solid block and steel frame construction, all City utilities, natural gas, 3 Phase electrical service

13' to 18' shop ceiling heights, 10' X 10' drive in loading door, gas heater in shop, two zone heat pump for offices, renovated interior finishes give a great impression

Location:

Great central location just across from the Norfolk Industrial Park with easy access for employees and trucks to Interstate 64, downtown Norfolk, Military Highway and Virginia Beach Boulevard.

Jonathan Commercial Properties

1340 N. Great Neck Road
#1272-120
Virginia Beach, VA 23454

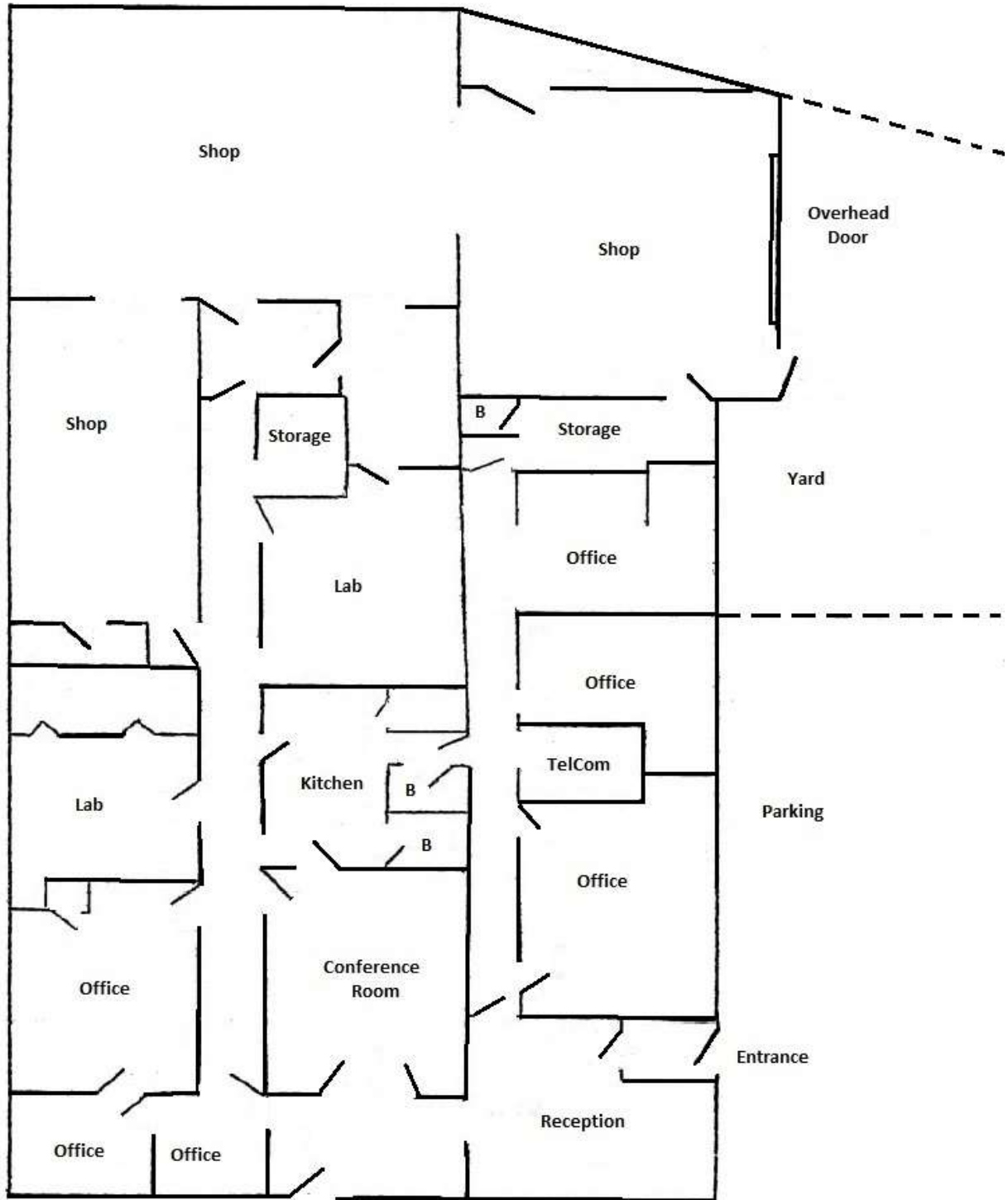
Jonathan Guion direct:
757.496.0866
JGuion@cox.net



1531 Early Street, Norfolk, Virginia 23502



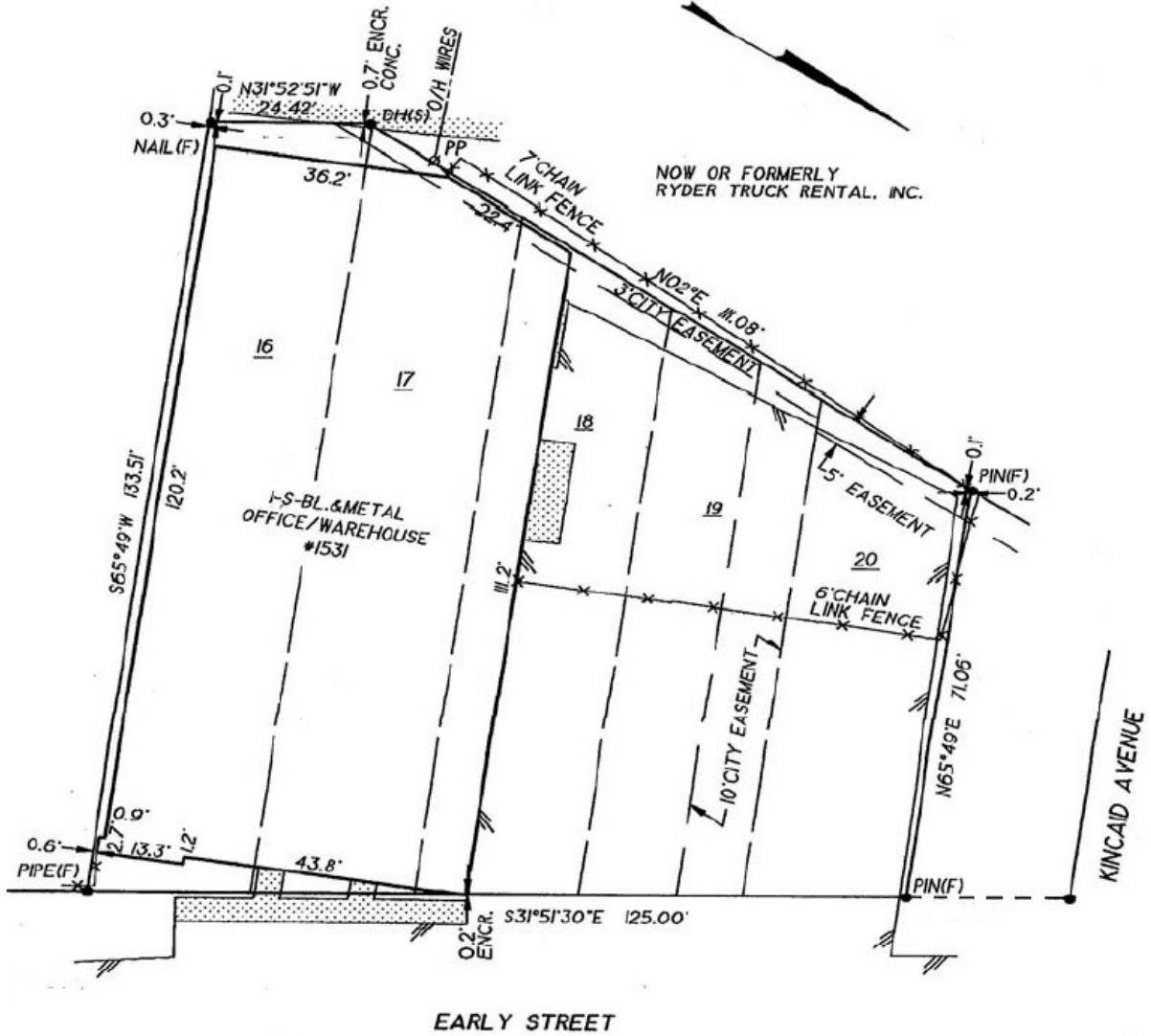
1531 Early Street, Norfolk, Virginia 23502



1531 Early Street
Norfolk, Virginia

Drawing not to scale

1531 Early Street, Norfolk, Virginia 23502



**For Sale
or For Lease**



Office and Warehouse with fenced yard **\$475,000.00**

1531 Early Street, Norfolk, Virginia 23502 **\$4,300.00/m**

Property Details: Great property, perfect for contractor or service company.

6,849 square foot building with approximately 3,000 square feet of finished offices, large conference room, lab space, kitchen, 3 bathrooms and approximately 3,850 square feet of shop space. Shop / warehouse space can be enlarged and can also make space for a showroom.

Zoned light industrial, .3354 acre lot with separate parking and fenced storage yard to secure your vehicles or equipment. Fenced area is expandable forward. Lease is triple net

Solid block and steel frame construction, all City utilities, natural gas, 3 Phase electrical service

13' to 18' shop ceiling heights, 10' X 10' drive in loading door, gas heater in shop, two zone heat pump for offices, renovated interior finishes give a great impression

Location:

Great central location just across from the Norfolk Industrial Park with easy access for employees and trucks to Interstate 64, downtown Norfolk, Military Highway and Virginia Beach Boulevard.

Jonathan Commercial Properties

1340 N. Great Neck Road
#1272-120
Virginia Beach, VA 23454

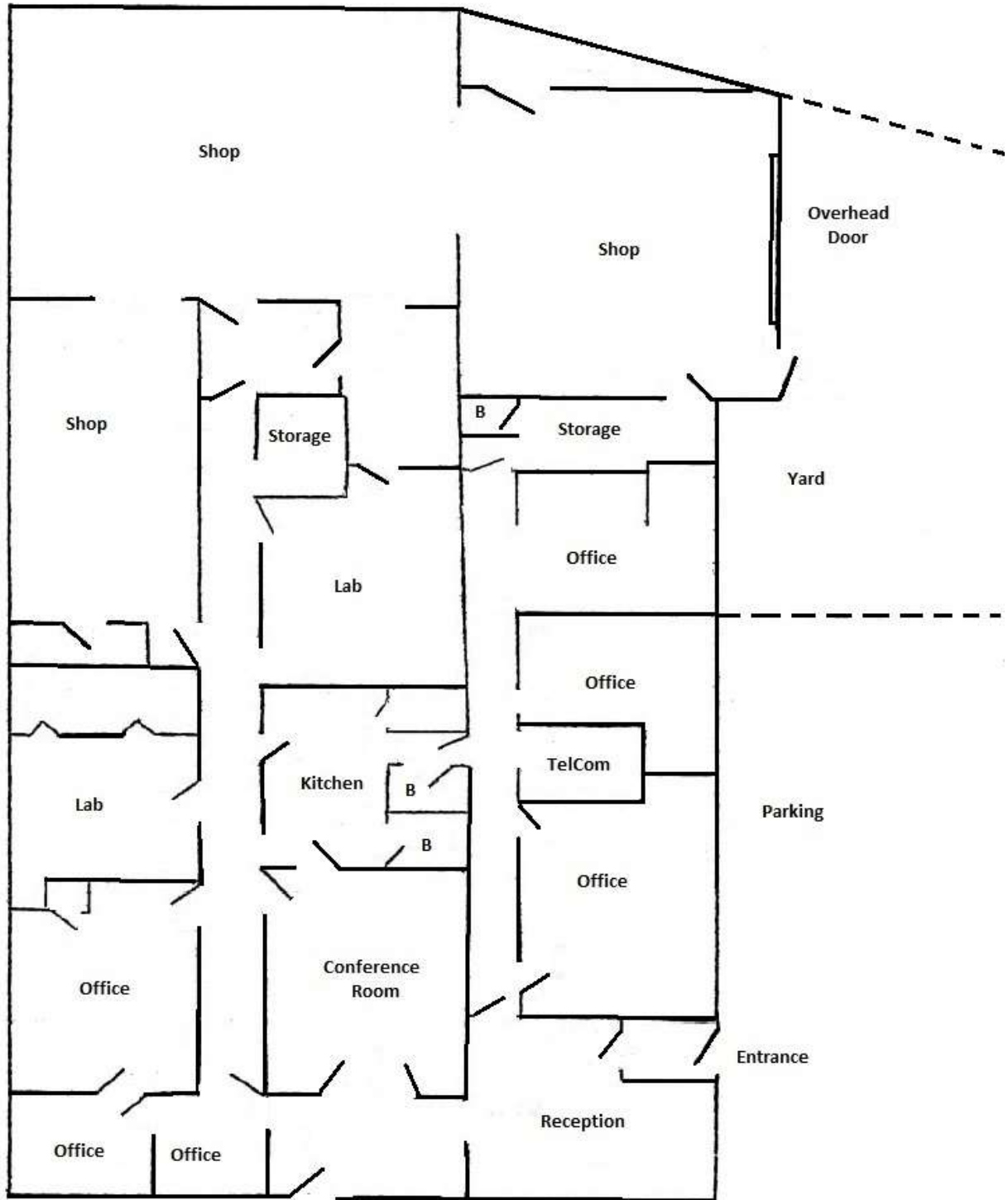
Jonathan Guion direct:
757.496.0866
JGuion@cox.net



1531 Early Street, Norfolk, Virginia 23502



1531 Early Street, Norfolk, Virginia 23502



1531 Early Street
Norfolk, Virginia

Drawing not to scale

1531 Early Street, Norfolk, Virginia 23502

